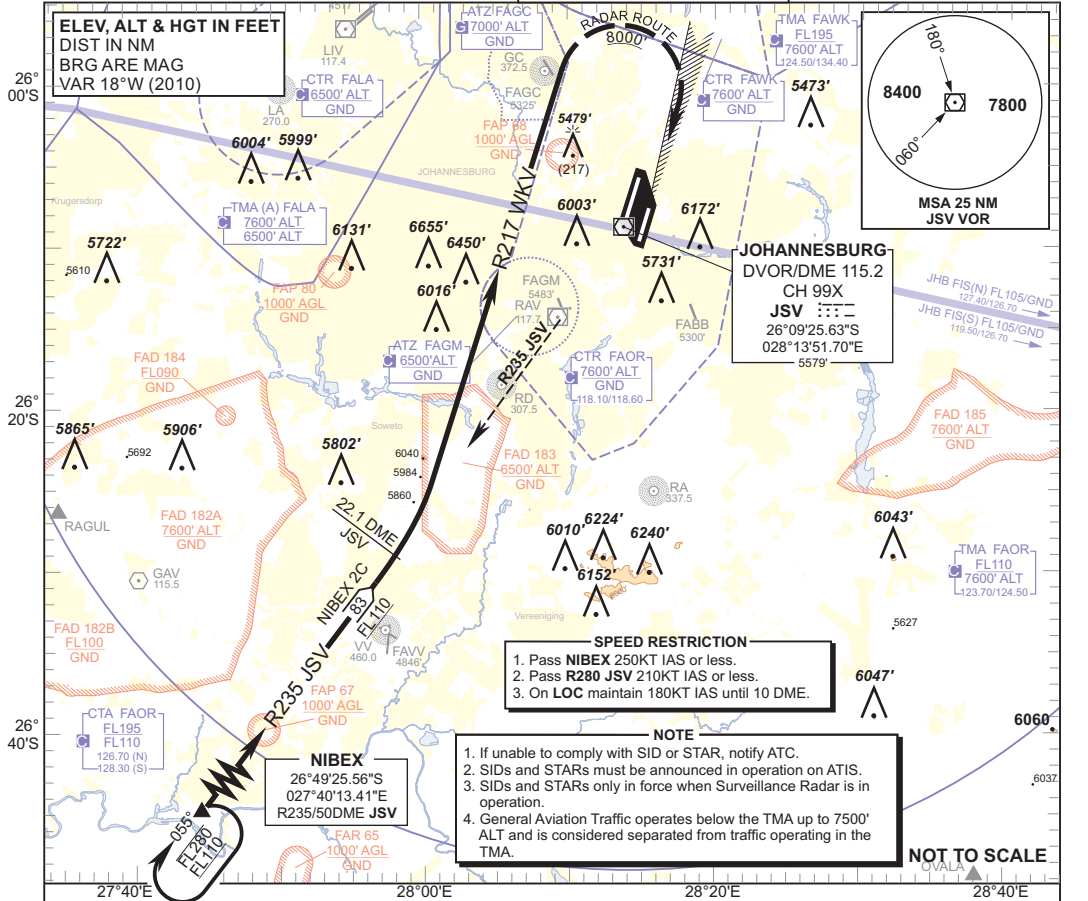


**STANDARD ARRIVAL  
CHART -  
INSTRUMENT  
(STAR)**

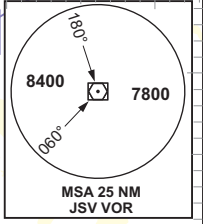
TRANSITION ALTITUDE  
**8000'**  
TRANSITION LEVEL  
**ATC**

RADAR APP S 124.50 TWR E 118.60  
E 124.50 W 118.10  
W 123.70 ATIS 126.20  
DIR 121.40  
ACC N 126.70 SMC 121.90

**JOHANNESBURG**  
(O.R. TAMBO INTERNATIONAL)  
**RWY 21L**  
NIBEX 2C



**ELEV, ALT & HGT IN FEET  
DIST IN NM  
BRG ARE MAG  
VAR 18°W (2010)**



**JOHANNESBURG  
DVOR/DME 115.2  
CH 99X  
JSV**  
26°09'25.63\"/>

- SPEED RESTRICTION**
1. Pass **NIBEX 250KT** IAS or less.
  2. Pass **R280 JSV 210KT** IAS or less.
  3. On **LOC** maintain **180KT** IAS until 10 DME.

- NOTE**
1. If unable to comply with SID or STAR, notify ATC.
  2. SIDs and STARs must be announced in operation on ATIS.
  3. SIDs and STARs only in force when Surveillance Radar is in operation.
  4. General Aviation Traffic operates below the TMA up to 7500' ALT and is considered separated from traffic operating in the TMA.

**NOT TO SCALE**

CHANGE: SPEED RESTRICTION BLOCK

**NIBEX 2C  
RWY 21L**

**Leave NIBEX on R235 JSV (INBD). Passing 22.1 DME JSV turn left to intercept R217 WKV (INBD) for radar vectoring onto the ILS LOC RWY 21.**

**COMMUNICATION FAILURE PROCEDURE (Squawk 7600)**

**Before NIBEX:** Proceed to NIBEX and enter the NIBEX hold. Hold at last assigned level for minimum 5 MIN, then descend to FL130 in the hold, or maintain last assigned level if below FL130. Leave NIBEX on the "After NIBEX" Communication Failure Procedure.

**After NIBEX:** Continue on the routing for the NIBEX 2C STAR. Crossing R281 JSV established on R217 WKV (INBD), descend to FL090. Passing 14.7 DME JSV on R217 WKV turn right onto track 121° and descend to 8000' ALT. Crossing R025 JSV turn right onto track 191° to intercept the ILS LOC RWY 21L. Complete a straight-in ILS approach and land RWY 21L.

**Note:** Aircraft entering the TMA at FL110 and below are to enter the NIBEX hold at last assigned level, and continue on the routing for the NIBEX 2C STAR.

**Caution:** Holding patterns below FL110 will be conducted partially outside controlled airspace.

In the event of a missed approach with the intention of diverting to an alternate aerodrome, proceed as follows:

- To the North and North-West: Follow the routing for the VASUR 3B SID.
- To the North-East: Follow the routing for the EGMEN 2B SID (Jet ACFT) or EXOBI 3B SID (Turboprop ACFT).
- To the South-East: Follow the routing for the APDAK 2B SID.
- To the South and South-East: Follow the routing for the RAGUL 3B SID.